

## MARKET INFORMATION

- EastChase is a 330 acre mixed-use development in the Montgomery, Alabama MSA. The three county (Autauga, Elmore, Montgomery) area has a population of more than 379,000. Retail in the MSA is dominated by EastChase and the immediate surrounding area. Stores in EastChase are representative of national, regional and local merchants with over 1,376,000 square feet of retail space and create an outstanding regional shopping venue for all of central Alabama.
- Known as one of the country's top historic cites, Montgomery's cultural destinations include the Alabama Shakespeare Theatre and the Montgomery Museum of Fine Arts, both located in Blount Cultural Park, the Rosa Parks Museum, Old Alabama Town and Dexter Avenue Baptist Church. In addition, Montgomery hosts numerous athletic events ranging from national girls' softball tournaments to state high school championship games to college football bowl games. In total, each year over 1.5 million people visit Montgomery for business and pleasure.
- Located in Montgomery is Hyundai Motor Manufacturing Alabama, Hyundai's first vehicle manufacturing plant in the United States. Montgomery is also home to three of the top 10 global automotive suppliers according to Automotive News: No. 2 Denso, No. 6 Mobis and No. 10 Lear.
- Maxwell Air Force Base and Gunter Annex contribute a rich aviation history, military leadership and academic excellence to Montgomery and the River Region. With more than 12,000 active, guard, reserve, civilian and contractor personnel, Maxwell-Gunter has a significant economic and cultural impact on the River Region.
- Five full time colleges are located in the trade area, and include Auburn University Montgomery, Alabama State University, Huntingdon College, Faulkner University and Troy University Montgomery.



## LOCATION

EastChase is located in the densest retail corridor and fastest growing residential areas of Montgomery, at the intersection of Interstate 85 and Taylor Road. Daily vehicle traffic on I-85 and Taylor Road exceeds 100,000 and 50,000, respectively.

- |                       |           |
|-----------------------|-----------|
| • Birmingham, Alabama | 92 miles  |
| • Mobile, Alabama     | 155 miles |
| • Atlanta, Georgia    | 164 miles |

**EASTCHASE OUTPARCELS  
MARKET INFORMATION**



**Jim Wilson & Associates, LLC**

2660 EastChase Lane, Suite 100, Montgomery, Alabama 36117-7024  
334 260 2500 (t) | 334 260 2533 (f) | [jwacompanies.com](http://jwacompanies.com)

## THE OUTPARCELS

Approximately 30 undeveloped acres of the initial 330 acre EastChase development is available for ground lease or purchase. Within EastChase are sites for retail, hospitality, residential and office, ranging in size from one acre up to 10 acres.

## THE DEVELOPMENT

EastChase opened in 2002 and is a joint venture by Jim Wilson & Associates and ALFA Realty. The 330 acre mixed use site includes a two mile tree line parkway, three major shopping center venues with over 1 million square feet in total with anchor stores Dillard's, Target, Kohl's, Books-A-Million, Old Navy and Michaels, four hotels and a 100,000 square feet class A office building, Lakeview Center. As a part of EastChase the peripheral land development has been emphasized and is home to over 30 businesses and restaurants that include Chick-fil-A, Wendy's, Chipotle, Starbucks, Chili's, Texas Roadhouse Grill, Walk-On's Sports Bistreaux, Red Robin, Verizon, Marshall's, HomeGoods, Full Moon Barbeque and Hobby Lobby.

## MAJOR EMPLOYERS

- Maxwell-Gunter Air Force Base
- State of Alabama
- Montgomery Public Schools
- Baptist Health
- Hyundai Motor Manufacturing Alabama

## TRADE AREA / DEMOGRAPHICS

DEMOGRAPHICS	5 Mile	10 Mile	20 Mile
2023 Population	88,364	208,870	328,193
2028 Projected Population	90,004	210,826	334,299
2023 Avg. Household Income	\$109,184	\$95,641	\$93,076
2023 Households	37,993	85,027	130,398
DRIVE TIME	20 Minute	30 Minute	60 Minute
2023 Population	145,276	219,947	441,224
2028 Projected Population	147,455	221,979	451,680
2023 Avg. Household Income	\$95,070	\$90,794	\$87,412
2023 Households	61,427	89,832	174,994

## CONTACT INFORMATION

Woody Rush  
*Senior Vice President of Leasing*  
334.260.2524  
[w.rush@jwacompanies.com](mailto:w.rush@jwacompanies.com)

**EASTCHASE OUTPARCELS**  
**GENERAL INFORMATION/DEMOGRAPHICS**



**Jim Wilson & Associates, LLC**

2660 EastChase Lane, Suite 100, Montgomery, Alabama 36117-7024  
334 260 2500 (t) | 334 260 2533 (f) | [jwacompanies.com](http://jwacompanies.com)





# EASTCHASE OUTPARCELS AERIAL / RETAILERS

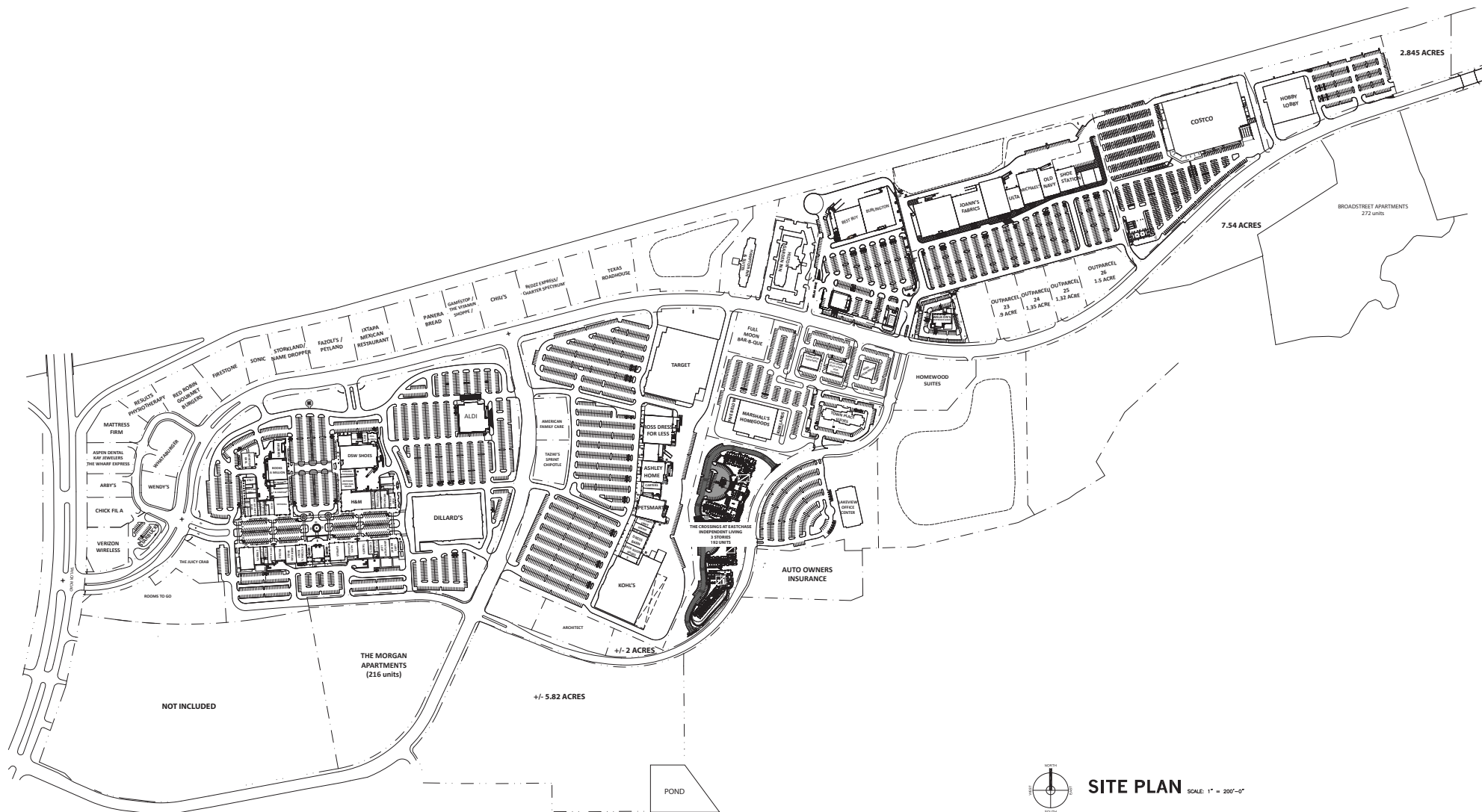


**Jim Wilson & Associates, LLC**

2660 EastChase Lane, Suite 100, Montgomery, Alabama 36117-7024

334 260 2500 (t) | 334 260 2533 (f) | [jwacompanies.com](http://jwacompanies.com)





# EASTCHASE OUTPARCELS SITE PLAN



**Jim Wilson & Associates, LLC**

2660 EastChase Lane, Suite 100, Montgomery, Alabama 36117-7024

334 260 2500 (t) | 334 260 2533 (f) | jwacompanies.com